



📍 Afitos Cottage, 1 Chestnut Drive, Bulkington, Wiltshire, SN10 1TB

🔗 Offers In Excess Of £350,000

A much improved and delightfully presented 3-bedroom semi-detached home in the popular village of Bulkington.

- Much improved by current owners
- 3-bedrooms
- Semi-detached home
- Garage and driveway parking
- Delightful rural views to the front
- Popular village location
- En-suite to principal bedroom
- Wood burner in reception room
- Easily maintainable rear garden

🏠 Freehold

🏠 EPC Rating D



A well presented three bedroom semi-detached home, much improved by the current owners and enjoying a particularly attractive village setting with a delightful rural outlook to the front and the village church to the rear.

The ground floor accommodation is arranged around a welcoming reception room, which now features a recently installed log burner creating a warm and inviting focal point. This space leads through to a separate dining room, ideal for everyday family life and entertaining. The kitchen has been newly fitted and is smartly finished, providing a modern and practical space that complements the rest of the home.

Upstairs, the principal bedroom benefits from its own en-suite shower room. There are two further bedrooms, with bedroom two enjoying a peaceful outlook to the rear, and these are served by a family bathroom.

Outside, the property is complemented by driveway parking and a single garage. To the rear is an easily maintainable garden, mostly laid to lawn with a patioed area providing space for outdoor seating and entertaining. Chestnut Drive is a sought-after village location, offering a pleasant balance of rural surroundings while remaining within easy reach of Devizes. The vendors are suited, allowing for a straightforward onward move.

Situation

The property is situated within the popular village of Bulkington with delightful rural views to the front. There is a good community spirit within the village and a thriving family run public house/restaurant called 'The Well,' there is also a great children's playing field with a fine selection of local schooling in the area including Keevil, Seend, Lavington Secondary and Dauntsey's School all closeby with bus services. Surrounding area provides several miles of circular countryside walks

Devizes town centre lies some six miles east of Bulkington providing a wider range of amenities and a thriving weekly market. The major towns of Swindon, Salisbury, Bath, Chippenham and Marlborough are all within a 25 mile radius. Mainline railway services are available from Chippenham, Pewsey, Trowbridge, Melksham and Westbury providing links to Bristol and London .

Property information

Electric heating. We are advised mains water, electric and drainage are connected.

Tenure: Freehold

EPC rating: D

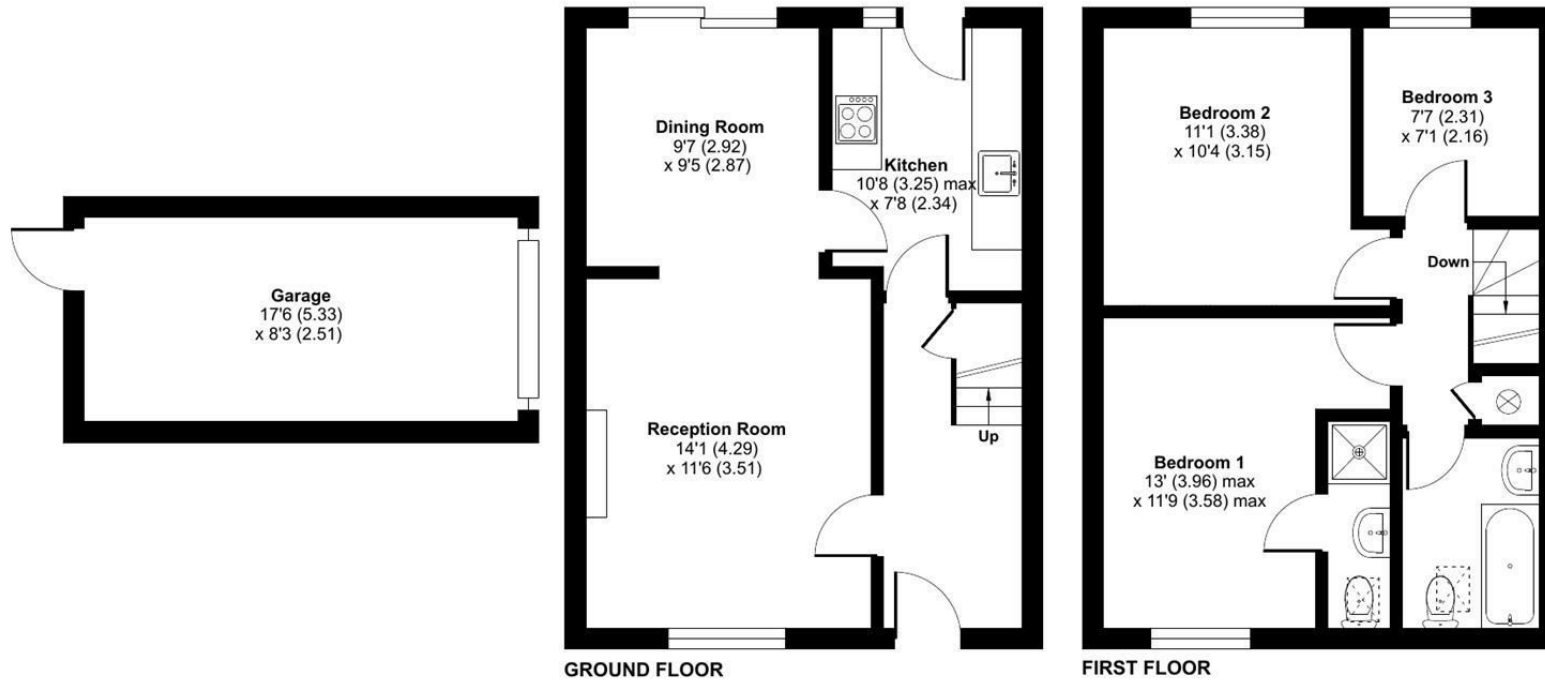
Council tax band: D



Chestnut Drive, Bulkington, Devizes, SN10

Approximate Area = 994 sq ft / 92 sq m (includes garage)

For identification only - Not to scale



Floor plan produced in accordance with RICS Property Measurement 2nd Edition, Incorporating International Property Measurement Standards (IPMS2 Residential). © nitchecom 2026. Produced for Strakers. REF: 902119

Disclaimer These particulars, whilst believed to be accurate are set out as a general outline only for guidance and do not constitute any part of an offer or contract. Intending purchasers should not rely on them as statements of representation of fact, but must satisfy themselves by inspection or otherwise as to their accuracy. No person in this firm's employment has the authority to make or give any representation or warranty in respect of the property. All measurements and distances are approximate only. Your home is at risk if you do not keep up repayments on a mortgage or other loan secured on it.